

# Volunteer Resources

As a volunteer at Centennial Infant and Child Centre you are given the opportunity to work one to one with our preschool children. Our children are unique in their abilities and their diagnosis. To help facilitate your learning we have created several links to informative websites so you can better understand our children. Please feel free to share your favorites with us.

## DOWN SYNDROME

- [www.cdss.ca](http://www.cdss.ca)
- <http://connectability.ca/2011/10/04/down-syndrome/>

Video: What is Low Muscle Tone? Rise and Shine Therapy

- [https://youtu.be/YNnwf\\_XbRac](https://youtu.be/YNnwf_XbRac)

## AUTISM SPECTRUM DISORDER (ASD)

- [www.autismcanada.org](http://www.autismcanada.org)
- <http://connectability.ca/2011/04/15/autism-spectrum-disorder-asd/>

YouTube video: Early Signs of Autism video tutorial Kennedy

- Krieger Institute 9 min <https://youtu.be/YtvP5A5OHpU>

YouTube Video: Being a Play Partner

- <https://youtu.be/V-c50HNnPg0>

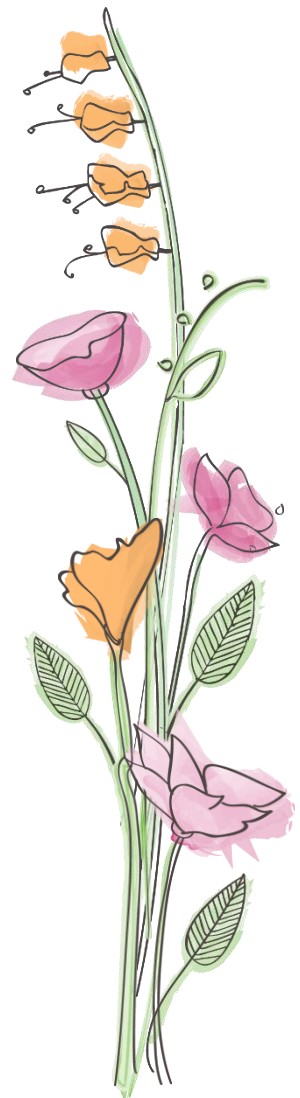
## SENSORY PROCESSING DISORDER (SPD)

YouTube video: A Child's view of Sensory processing

- [www.youtube.com/watch?v=D1G5ssZIVUw](http://www.youtube.com/watch?v=D1G5ssZIVUw)
- <http://connectability.ca/2011/10/06/sensory-processing-disorder-spd/>

## DRAVET SYNDROME

- <http://dravet.ca/our-stories>



- <http://www.dravetfoundation.org/>
- <https://rarediseases.org/rare-diseases/dravet-syndrome-spectrum/>

## **CEREBRAL PALSY**

- <http://cerebralpalsy.org/>
- <http://connectability.ca/2011/10/04/cerebral-palsy/>

## **DEVELOPMENTAL DELAY (DD) / SPEECH AND LANGUAGE DISORDERS**

- <http://connectability.ca/2011/10/04/developmental-delay/>
- <http://www.howkidsdevelop.com/fcCommon.html>
- <http://connectability.ca/2010/09/23/speech-and-language-disorders/>

## **PRADER WILLIE SYNDROME**

- <http://www.fpwr.ca/about-prader-willie-syndrome/>
- <http://connectability.ca/2011/10/06/prader-willie-syndrome/>

## **RETTS SYNDROME**

- <http://www.rettsyndrome.org/about-rett-syndrome>
- <http://connectability.ca/2011/10/06/rett-syndrome/>

## **(CORNELIA DE LANGE SYNDROME - CDL)**

- <https://rarediseases.org/rare-diseases/cornelia-de-lange-syndrome/>

## **WILLIAMS SYNDROME**

- <https://williams-syndrome.org/what-is-williams-syndrome>
- <http://connectability.ca/2011/10/11/williams-syndrome/>

## **MICROCEPHALY**

- <http://connectability.ca/2011/10/05/microcephaly/>
- <http://my.clevelandclinic.org/childrens-hospital/health-info/diseases-conditions/hic-Microcephaly>

## **EPILEPSY**

- <http://www.efepa.org/>
- <http://www.epilepsy.ca/en-CA/Home.html>

## **ANGELMAN SYNDROME**

- <http://connectability.ca/2010/09/27/angelman-syndrome/>

## **3 M SYNDROME**

- <https://rarediseases.org/rare-diseases/three-m-syndrome/>

## **STURGE WEBER SYNDROME**

- <http://www.sturge-weber.org/>

## **SPINA BIFIDA**

- <http://www.cdc.gov/ncbddd/spinabifida/facts.html>
- <http://www.mayoclinic.org/diseases-conditions/spina-bifida/basics/definition/con-20035356>



## **BECKWITH WIEDEMANN SYNDROME**

- <http://www.nlm.nih.gov/medlineplus/ency/article/001186.htm>

## **ARTHROGRYPHOSIS**

- <http://www.muscle.ca/about-muscular-dystrophy/types-of-neuromuscular-disorders/arthrogryposis/>

## **CORTICAL VISION IMPAIRMENT (CVI)**

YouTube video: Understanding Cortical Vision Impairment

- <https://youtu.be/RWZRRL9SNPE>